

963 Installation Instructions

Issue 3

TREND

Author: Technical Publications

Issue: 3

Date: 11/08/2009

Part Number: TG201026

Copyright: © 2009 Honeywell Technologies Sàrl, ECC Division. All rights reserved.

This manual contains proprietary information that is protected by copyright. No part of this manual may be reproduced, transcribed, stored in a retrieval system, translated into any language or computer language, or transmitted in any form whatsoever without the prior consent of the publisher.

Manufactured for and on behalf of the Environmental and Combustion Controls Division of Honeywell Technologies Sàrl, ZA, La Pièce, 16, 1180 Rolle, Switzerland by its Authorized Representative, Trend Control Systems Limited.

For information contact:

Trend Control Systems Limited

P.O. Box 34

Horsham

W. Sussex

RH12 2YF

NOTICE: Trend Control Systems Limited makes no representations or warranties of any kind whatsoever with respect to the contents hereof and specifically disclaims any implied warranties of merchantability or fitness for any particular purpose. Trend Control Systems Limited shall not be liable for any errors contained herein or for incidental or consequential damages in connection with the furnishing, performance or use of this material. Trend Control Systems Limited reserves the right to revise this publication from time to time and make changes in the content hereof without obligation to notify any person of such revisions or changes.

Windows, Windows XP Professional, Windows XP Home, Windows 2003, and Windows Vista are trademarks of Microsoft Corporation. BACnet is a trademark of ASHRAE. The Java Runtime Environment (JRE) is a product of Sun Microsystems, Inc.

Please send any comments on this or any other Trend technical publication to techpubs@trendcontrols.com

TABLE OF CONTENTS

1	ABOUT THESE INSTRUCTIONS.....	5
1.1	Conventions Used in this Manual	5
1.2	Contacting Trend.....	5
2	INSTALLATION.....	7
2.1	Installation Procedures.....	8
2.1.1	Standard Installation	8
2.1.2	Installation for use with Full Version of SQL Server	9
2.1.3	Installation for use with a Remote SQL Server	10
2.1.4	Installation on an Unsupported Language Version of Windows	11
2.2	Connect the PC to the Ethernet Network	11
2.3	Install the 963 Software	12
2.4	SQL Server Installation and Configuration.....	12
2.4.1	SQL Server 2005 Express Edition with Advanced Services.....	12
2.4.2	SQL 2005 Full Version.....	16
2.5	License 963	17
2.5.1	Obtain an Unlock Code.....	17
2.5.2	Enter the Unlock Code.....	18
2.6	Configure 963 to Connect to a Remote SQL Server	19
2.7	Connect the GSM Modem	19
2.8	Configure the GSM Connection.....	20
2.8.1	Configure the GSM Connection Automatically.....	20
2.8.2	Configure the GSM Connection Manually	21
2.9	Connect to the IQ Network	22
2.9.1	Connect over Ethernet.....	22
2.9.2	Connect over the Current Loop.....	23
2.10	Check Communications	23
2.11	Configure the Windows User to have Access to SQL Server	24
3	UPGRADE.....	25
3.1	Upgrade 963 when the Database is on a Remote PC	25
3.2	Upgrade from 963 v1.x or 962.....	26
3.2.1	Turn Off the Database Password in 963 v1	26
3.2.2	Check SQL Queries	26
3.2.3	Return to the Original 963 System.....	27
4	TRANSFER THE LICENCE TO A DIFFERENT LOCATION	29
	INDEX.....	31

This page is intentionally left blank.

1 ABOUT THESE INSTRUCTIONS

These instructions apply to 963 version 3.20 software. They provide information about installing, upgrading, and licensing the 963.

Other relevant documentation is:

- 963 Data Sheet (TA200636)
- 963 Engineering Manual (TE200637)
- 963 User Guide (TC200635)
- 963 Web User Guide (TC200685)
- Product Data Sheets

These documents are available in PDF format in the Documentation directory.

1.1 Conventions Used in this Manual

There are numerous items and instructions in this manual, the conventions below are designed to make it quick and easy to find and understand the information.

- Menu commands are in **bold** type.
- Buttons and options in dialogue box that you need to select are in **bold** type.
- The names of text boxes and dialogue boxes are in **bold** type.
- Key combinations that you should press appear in normal type. If joined with a plus sign (+), press and hold the first key while you press the remaining one(s). For example CTRL+P indicates holding down the control key while pressing P.
- Text you should enter is in *Italic* type.

1.2 Contacting Trend

Head Office

Trend Control Systems Ltd
PO Box 34
Horsham
Sussex
RH12 2YF
England

Tel: +44 (0) 1403 211888
Fax: +44 (0) 1403 241608

Details of regional offices can be found on our Web site.

Internet

Our company web site (www.trendcontrols.com) provides information about our products and us, or our support web site (<http://pnet.trend-controls.com>).

Technical Support

Our support department provides technical support during normal office hours. Before contacting them ensure that you have your Technical Support PIN number available, without this we will be unable to provide you with any support.

Trend Control Systems Ltd.
Technical Support Department
PO Box 34
Horsham
Sussex
RH12 2YF
England

Tel: +44 (0) 1403 226600
Email: trendts@trendcontrols.com
Fax: +44 (0) 1403 226310

Technical Publications

Please send any comments on this or any other Trend technical publication to techpubs@trendcontrols.com.

This page is intentionally left blank.

2 INSTALLATION

This section describes how 963 should be installed to ensure that it operates correctly. 963 can be run free of charge, for a 28-day trial period but after this a licence must be purchased in order to continue using 963. Before installing 963 or upgrading to 963 v3.20, you should ensure that the PC meets the system requirements.

963 System Requirements

The specifications below are those recommended to run 963. They refer to a standard PC with mouse, keyboard, hard drive, floppy disk drive, DVD drive, monitor, and sound capabilities (optional).

Recommended Hardware

Processor	≥2 GHz.
RAM	1 GB
Disk space	40 GB hard disk with 1 GB for installation + space for site data.
Graphics card	128 MB, 1280x1024 resolution.
Network card	Ethernet Network Card (required for 963 Server, if 963 is to access the IT network e.g. is to connect to the IQ network using Ethernet, if SNMP is to be used, or communication with BACnet devices is required).
COM ports	2 (for connection to LNC2, or CNC2 and GSM modem) ²
Parallel/USB ports	1 (for Alarm Printer). ³
PCI Slots	2 standard size (for Ethernet card, and LNC2).

Software

⁴Operating system Windows XP Professional SP3 with Internet Explorer version 6 SP1 or greater⁴

Minimum Hardware

Processor	≥1 GHz.
RAM	512 MB
Disk space	20 GB hard disk with 1 GB for installation + space for site data.
Graphics card	64 MB, 1280x1024 resolution.
Network card	Ethernet Network Card (required for 963 Server, if 963 is to access the IT network e.g. is to connect to the IQ network using Ethernet, if SNMP is to be used, or communication with BACnet devices is required).
COM ports	2 (for connection to LNC2, or CNC2 and GSM modem) ²
Parallel/USB ports	1 (for Alarm Printer). ³
PCI Slots	2 standard size (for Ethernet card, and LNC2).

Software

⁴Operating system Windows XP Professional SP3 with Internet Explorer version 6 SP1 or greater⁴

¹If TOPS and 963 are to be run on a single PC a dual core processor is recommended.

²A built in COM port is required for the GSM modem supplied with 963 SMS.

³The use of a dot matrix printer is recommended for alarms. Use of inkjet or laser printers for alarm printing is likely to cause undesirable results e.g. each line of the alarm on a separate page. A separate printer for graphs and schematic pages (graphics printer) is recommended. The graphics printer can be connected using a parallel or USB port. The printer may also be accessed over the office IT network (providing a network card is fitted). This should be taken into account when specifying the required ports for the PC.

⁴963 will also operate on Windows Vista™ Business⁴ SP1 and Windows Server 2003 SP2 Standard, and Enterprise with Internet Explorer version 6 SP1.

⁵963 will only operate on 32 bit operating systems.

If installing 963 on a PC that has a full installation of SQL server earlier than SQL Server 2005 it is necessary to upgrade to SQL Server 2005.

If the 963 is to communicate with devices on a BACnet network TOPS must also be installed as described in the TOPS Installation Instructions (TG201036). This installation can be on the same PC as 963, or on a different PC providing communication is possible between the two over Ethernet.

If 963 is to communicate with BACnet devices using TOPS installed on the same PC the PC must be running Windows XP, or Windows 2003 SP1.

963 Clients

PCs: 963 Clients may be of any configuration providing they are running TCP/IP networking protocol, and have an Ethernet card, and have a web browser installed. For full graphics capabilities (graphic mode) Internet Explorer v6.0 or greater, or Firefox 3 (recommended Internet Explorer version 6 or greater) and the Sun Java runtime environment J2SE 5.0 or greater is required. The browser must have JAVA script enabled. Other browsers will provide a text only display (text mode).

PDAs: PDA's running Windows Mobile 2003 Second Edition or greater (text mode only).

Smartphones: Nokia 9210i, and smartphones running Window Mobile 5 or greater (text mode only).

Note that the 963 has not been tested with all devices and Trend cannot guarantee a particular device's compatibility with 963 Server.

Popup blocking software must be disabled, or configured to allow popups from the 963 Server.

PC Resources

963 is a real time application; installed PCs must have enough free resources to safely run 963 under peak load conditions. We cannot guarantee system performance if other 3rd party software is installed, for example virus checking software.

Compressed files

Windows compression must not be used for the 963's SQL database, or any other 963 file in the project directory.

2.1 Installation Procedures

The process for installing the 963 differs slightly depending on your requirements, and system configuration, you should follow the one that matches your needs.

- Standard Installation - This section describes the standard 963 installation procedure, it should be suitable for most installations and should be followed unless your installation is one of the non standard ones described below.
- Installation for use with full version of SQL Server - This section describes the installation procedure if the 963 is to connect to a full version of SQL Server on the same PC as 963 instead of SQL Server 2005 Express Edition with Advanced Services.
- Installation for use with a Remote SQL Server - This section describes the installation procedure required if the 963 is to access a remote SQL Server.
- Installation on an Unsupported Language Version of Windows® - This section describes the installation procedure required if the 963 is to be installed on a PC running a Windows® language other than English (UK), Arabic, Simplified Chinese, Traditional Chinese, Danish, German, Spanish, Finnish, French, Italian, Dutch, Polish, Russian, or Swedish.

2.1.1 Standard Installation

This section describes the standard installation procedure for installing the 963. This procedure should be suitable for most installations. When installed as described below 963 will use SQL Server 2005 Express Edition with Advanced Services installed on the same PC as 963, and will access SQL server in Windows Authentication mode.

Standard installation:

1. Ensure that the PC meets the system requirements.
2. If required connect the PC to the Ethernet Network as described in the 'Connect the PC to the Ethernet Network' section of these instructions.
3. Install the 963 software as described in the 'Install the 963 Software' section of these instructions.
4. Log in to Windows as an 'Admin' user, run 963 and licence it as described in the 'Licence 963' section of these instructions.

When the 963 is run for the first time, it displays a password for the System Administrator. This password **MUST** be noted, as without this password it will not be possible to gain access to the 963.

5. Connect the GSM modem as described in the 'Connect the GSM Modem' section of these instructions. (963 SMS Direct only).
6. Configure the GSM connection as described in the 'Configure the GSM Connection' section of these instructions. (963 SMS Direct only).
7. Connect the PC to the IQ network as described in the 'Connect the PC to the IQ Network' section of these instructions.
8. Check communications as described in the 'Check Communications' section of these instructions.
9. If users not belonging to the Windows 'Administrator' workgroup are to run 963 ensure that they have access to SQL server as described in the 'Configure the Windows User to have Access to SQL Server' section of these instructions.

After the installation is complete it is strongly recommended that the 963 be configured to automatically archive the database to prevent it becoming too large as described in the 'Configure Automatic Archiving' section of the 963 Engineering Manual (TE200637).

2.1.2 Installation for use with Full Version of SQL Server

This section describes how 963 should be installed for use with a full version of SQL Server that is installed on the same PC as 963. To carry out this procedure a full version of SQL Server is required. This must be purchased separately, and is not available from Trend.

To install 963 for use with a full version of SQL Server:

1. Ensure that the PC meets the system requirements.
2. If required connect the PC to the Ethernet Network as described in the 'Connect the PC to the Ethernet Network' section of these instructions.
3. Install a Full Version of SQL Server 2005 as described in the 'Install a Full Version of SQL Server 2005' section of these instructions.
4. Configure a Full Version of SQL Server as described in the 'Configure a Full Version of SQL Server' section of these instructions.
5. Install the 963 software as described in the 'Install the 963 Software' section of these instructions.
6. Log in to Windows as an 'Admin' user, run 963 and licence it as described in the 'Licence 963' section of these instructions.

When the 963 is run for the first time, it displays a password for the System Administrator. This password **MUST** be noted, as without this password it will not be possible to gain access to the 963.

8. Connect the GSM modem as described in the 'Connect the GSM Modem' section of these instructions. (963 SMS Direct only).
9. Configure the GSM connection as described in the 'Configure the GSM Connection' section of these instructions. (963 SMS Direct only).
10. Check communications as described in the 'Check Communications' section of these instructions.
11. If users not belonging to the Windows 'Administrator' workgroup are to run 963 ensure that they have access to SQL server as described in the 'Configure the Windows User to have Access to SQL Server' section of these instructions.

After the installation is complete it is strongly recommended that the 963 be configured to automatically archive the database to prevent it becoming too large as described in the 'Configure Automatic Archiving' section of the 963 Engineering Manual (TE200637).

2.1.3 Installation for use with a Remote SQL Server

This section describes how 963 should be installed for use with a remote SQL Server.

To install 963 for use with a remote SQL Server:

1. Ensure that the PC meets the system requirements.
2. Connect the PC to the Ethernet Network as described in the 'Connect the PC to the Ethernet Network' section of these instructions.
3. Install the 963 software on the appropriate PC (PC1) as described in the 'Install the 963 Software' section of these instructions.
4. Install the required version of SQL Server on the appropriate PC (PC2). For details of installing SQL Server 2005 Express Edition with Advanced Services see the 'Install SQL Server 2005 Express Edition with Advanced Services' section of these instructions. For details of installing a full version of SQL Server 2005 see the 'Install a Full Version of SQL Server 2005' section of these instructions.
5. Configure the SQL Server. For details of configuring SQL Server 2005 Express Edition with Advanced Services see the 'Configure SQL Server 2005 Express Edition with Advanced Services' section of these instructions. For details of configuring a full version of SQL Server 2005 see the 'Configure a Full Version of SQL Server' section of these instructions.
6. Ensure that the PC running 963 (PC 1) and the PC running SQL Server (PC 2) are set up on the same network or domain.
7. Create a directory on PC 2 that is the same as directory 963 is installed in on PC 1 (normally c:\program files\trend control systems\963) on PC 2.
8. Log in to Windows as an 'Administrator' user, run 963 and licence it as described in the 'Licence 963' section of these instructions.

When the 963 is run for the first time, it displays a password for the System Administrator. This password **MUST** be noted, as without this password it will not be possible to gain access to the 963.

9. Configure the 963 to Connect to a Remote SQL Server as described in the 'Configure 963 to Connect to a Remote SQL Server' section of these instructions.
10. Restart 963. The 963 will create an empty database on the remote SQL Server PC (PC2).
11. Connect the GSM modem as described in the 'Connect the GSM Modem' section of these instructions. (963 SMS Direct only).
12. Configure the GSM connection as described in the 'Configure the GSM Connection' section of these instructions. (963 SMS Direct only).
13. Connect the PC to the IQ network as described in the 'Connect the PC to the IQ Network' section of these instructions.
14. Check communications as described in the 'Check Communications' section of these instructions.
15. If users not belonging to the Windows 'Administrator' workgroup are to run 963 ensure that they have access to SQL server as described in the 'Configure the Windows User to have Access to SQL Server' section of these instructions.

After the installation is complete it is strongly recommended that the 963 be configured to automatically archive the database to prevent it becoming too large as described in the 'Configure Automatic Archiving' section of the 963 Engineering Manual (TE200637).

2.1.4 Installation on an Unsupported Language Version of Windows

This section describes how 963 should be installed on a PC running a Windows language other than English (UK), Arabic, Simplified Chinese, Traditional Chinese, Danish, German, Spanish, Finnish, French, Italian, Dutch, Polish, Russian, or Swedish.

To install 963 on an unsupported language version of Windows®:

1. Ensure that the PC meets the system requirements.
2. If required connect the PC to the Ethernet Network as described in the 'Connect the PC to the Ethernet Network' section of these instructions.
3. Install SQL Server 2005 Express Edition with Advanced Services as described in the 'Install SQL Server 2005 Express Edition with Advanced Services' section of these instructions.
4. Configure SQL Server 2005 Express Edition with Advanced Services as described in the 'Configure SQL Server 2005 Express Edition with Advanced Services' section of these instructions.
5. Install the 963 software as described in the 'Install the 963 Software' section of these instructions.

Note that during the installation of the 963 software will inform you that SQL Server is installed and that the installation of SQL Server 2005 Express Edition with Advanced Services will not be carried out.

6. Log in to Windows as an 'Administrator' user, run 963 and licence it as described in the 'Licence 963' section of these instructions.

When the 963 is run for the first time, it displays a password for the System Administrator. This password **MUST** be noted, as without this password it will not be possible to gain access to the 963.

7. Connect the GSM modem as described in the 'Connect the GSM Modem' section of these instructions. (963 SMS Direct only).
8. Configure the GSM connection as described in the 'Configure the GSM Connection' section of these instructions. (963 SMS Direct only).
9. Connect the PC to the IQ network as described in the 'Connect the PC to the IQ Network' section of these instructions.
10. Check communications as described in the 'Check Communications' section of these instructions.
11. If users not belonging to the Windows 'Administrator' workgroup are to run 963 ensure that they have access to SQL server as described in the 'Configure the Windows User to have Access to SQL Server' section of these instructions.

After the installation is complete it is strongly recommended that the 963 be configured to automatically archive the database to prevent it becoming too large as described in the 'Configure Automatic Archiving' section of the 963 Engineering Manual (TE200637).

2.2 Connect the PC to the Ethernet Network

If the 963 is to connect to the IQ network over Ethernet, is act as a server providing BMS information to clients, or if access to company IT information such as the company Intranet, or the Internet is required, the PC must be connected to an Ethernet network using an Ethernet connection. Connection in this way does not prevent connection to the IQ network over the Ethernet.

To connect the PC to the Ethernet network:

1. If necessary fit a suitable Ethernet adaptor to the PC, following the manufacturer's instructions.
2. If connection is to be made using a wireless network necessary configure the device to connect to the wireless network, otherwise plug the Ethernet network cabling into the Ethernet adaptor.
3. Configure Windows Networking to suit the Ethernet network.
4. Configure any other necessary parameters required for the office network.

Note that assistance from the IT department responsible for the Ethernet network will normally be required.

2.3 Install the 963 Software

The installation of the 963 software is performed by a step-by-step installation program. During the installation procedure you will be required to enter the serial number for the software. This is located on the back of the case; you should keep this number in a safe place because it will be required when you purchase a licence.

The installation will install SQL Server 2005 Express with Advanced Services operating in Mixed (SQL) mode if it is not already installed. If MSDE 2000 is installed with the default instance 963 will ask if the upgrade is to be carried out. If the upgrade is not performed it is necessary to install and configure SQL Server 2005 Express with Advanced Services as described in the 'Install SQL Server 2005 Express Edition with Advanced Services' and 'Configure SQL Server 2005 Express Edition with Advanced Services' sections of these instructions. If a full version of SQL 2005 is installed 963 informs the user that SQL Server must be correctly configured as described in the 'Configure a Full Version of SQL Server' section of these instructions. If an earlier full version of SQL Server is installed a dialogue box is displayed to inform the user that the SQL Server 2005 must be installed and configured as described in the 'Install a Full Version of SQL Server 2005' and 'Configure a Full Version of SQL Server' sections of these instructions.

To install the software:

1. Log in to the PC as someone with Administrator rights.
2. Insert the DVD into the disk drive, and wait for the installation screen to appear.

Note that if autorun is disabled run SETUP.exe from the DVD.

3. Follow the instructions on the screen.


2.4 SQL Server Installation and Configuration

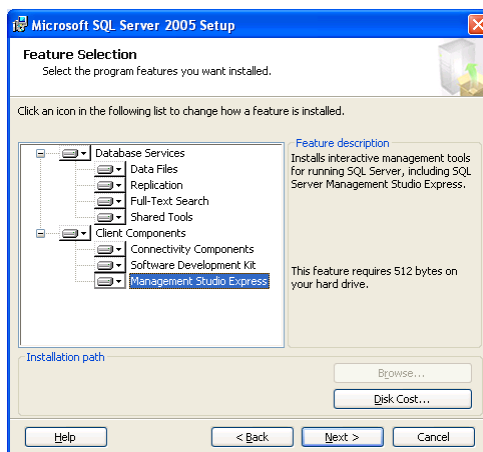
The information contained in this section is only required if a non standard installation of 963 or SQL server is required. It contains information about installing SQL Server 2005 Express Edition with Advanced Services, installing SQL Server Backward Compatibility Components, and configuring SQL Server 2005 Express Edition with Advanced Services. It also describes installation and configuration of a full version of SQL Server.

2.4.1 SQL Server 2005 Express Edition with Advanced Services

2.4.1.1 Install SQL Server 2005 Express Edition with Advanced Services

To install SQL Server 2005 Express Edition with Advanced Services:

1. Log on to the PC as someone with Administrator rights.
2. Run 'SQLEXPRESS_ADV.EXE' from the 'Support Files\Microsoft SQL Server 2005 Express Edition' directory of the 963 DVD. The **Open File - Security** Warning dialogue box is displayed.
3. Click **Run**. The **End User License Agreement** screen is displayed.
4. Read the terms of the license and if you are happy with them select the **I accept the terms is the license agreement** option.
5. Click **Next>**. The **Installing Prerequisites** screen is displayed.
6. Click **Install**. The prerequisites will be installed. Once the installation is complete the **Install** button changes to **Next>**.
7. Click **Next>**. The **SQL Server Installation Wizard** is displayed.
8. Click **Next>**. The wizard checks the PC to ensure that the system configuration is suitable for the installation.
9. Once the check has completed click **Next>**. The **Registration Information** screen is displayed. If the configuration is not suitable take the necessary steps to resolve the issues.
10. Check that the registration information is correct.
11. Clear the **Hide advanced configuration options** check box.
12. Click **Next>**. The **Feature Selection** screen is displayed.
13. Select all the features by clicking the  next to each feature and selecting the option. When all options are selected the display appears as shown below.



The image above shows how the **Feature Selection** screen should appear when all the options are selected.

14. Click **Next>**. The **Instance Name** screen is displayed.
15. In the **Named Instance** box enter *MSSQLSERVER*.
16. Click **Next>**. The **Service Account** screen is displayed.
17. In the **Use the built-in System account** box select *Local System*.
18. Select the **SQL Browser** check box.
19. Click **Next>**. The **Authentication Mode** screen is displayed.
20. Select the **Mixed Mode (Windows Authentication and SQL Server Authentication)** option.
21. In the **Enter password** box enter *saTrend06*.
22. In the **Confirm password** box enter *saTrend06*.
23. Click **Next>**. The **Collation Settings** screen is displayed.
24. Click **Next>**. The **Configuration Options** screen is displayed.
25. Select the **Add user to the SQL Server Administrator role** check box
26. Click **Next>**. The **Error Usage Report Settings** screen is displayed.
27. Click **Next>**. The **Ready to Install** screen is displayed.
28. Click **Install**. The **Setup Progress** screen is indicates the installation progress. Once the installation is complete ticks appear next to all the options.
29. Click **Next>**. The **Completing Microsoft SQL Server 2005 Setup** screen is displayed.



30. Click **Finish**.
31. Install SQL Server Backward Compatibility Components as described in the 'Install SQL Server Backward Compatibility Components' section of these instructions.
32. For 963 to operate it is necessary to configure SQL Server 2005 Express Edition with Advanced Services as described in the 'Configure SQL Server 2005 Express Edition with Advanced Services' section of these instructions.

2.4.1.2 Install SQL Server Backward Compatibility Components

If the installation of SQL Server is not carried out by the 963's installation program it is necessary to install the SQL Server Backward Compatibility Components.

To install SQL Server Backward Compatibility Components:

1. Run 'SQLServer2005_BC.msi' from the 'Support Files\SQL Server 2005 Express BC components' directory of the 963 DVD. The **Open File - Security Warning** dialogue box is displayed.
2. Click **Run**. The **SQL Server 2005 Backward Compatibility Wizard** is displayed.
3. Click **Next>**. The **License Agreement** screen is displayed.
4. Read the terms of the license and if you are happy with them select the **I accept the terms is the license agreement** option.
5. Click **Next>**. The **Registration Information** screen is displayed.
6. Check that the registration information is correct.
7. Click **Next>**. The **Feature Selection** screen is displayed.
8. Click **Next>**. All features are required. The **Ready to Install the Program** screen is displayed.
9. Click **Install**. The **Installing Microsoft SQL Server 2005 Backward compatibility** screen is displayed indicating the progress of the install.
10. Once the installation is complete the **Completing the Microsoft SQL Server 2005 Backward compatibility setup** screen is displayed.
11. Click **Finish**.

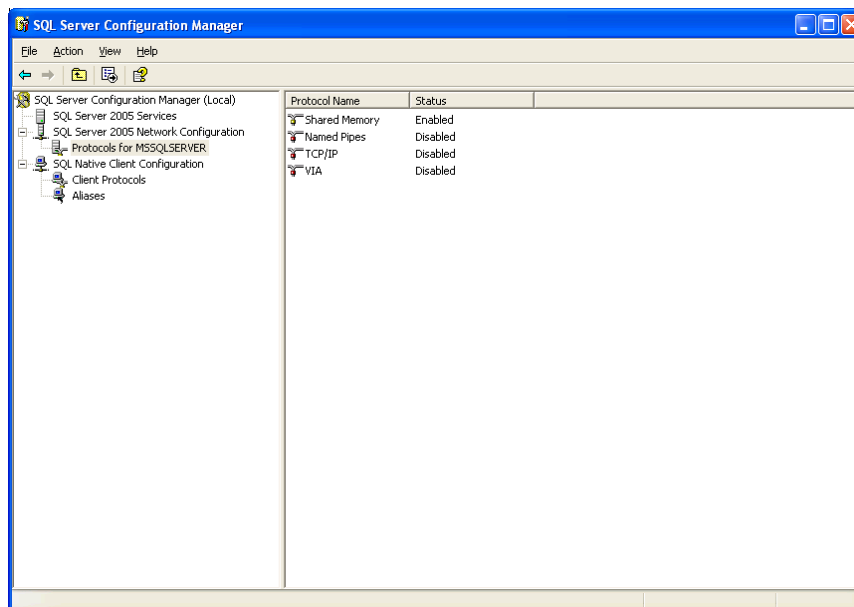
2.4.1.3 Configure SQL Server 2005 Express Edition with Advanced Services

If SQL Server 2005 Express Edition with Advanced Services has been installed manually as described in the 'Install SQL Server 2005 Express Edition with Advanced Services' section of this manual it must be configured correctly so that 963 can be used.

Note that this configuration is performed automatically if SQL Server 2005 Express Edition with Advanced Services is installed by the 963's installation program.

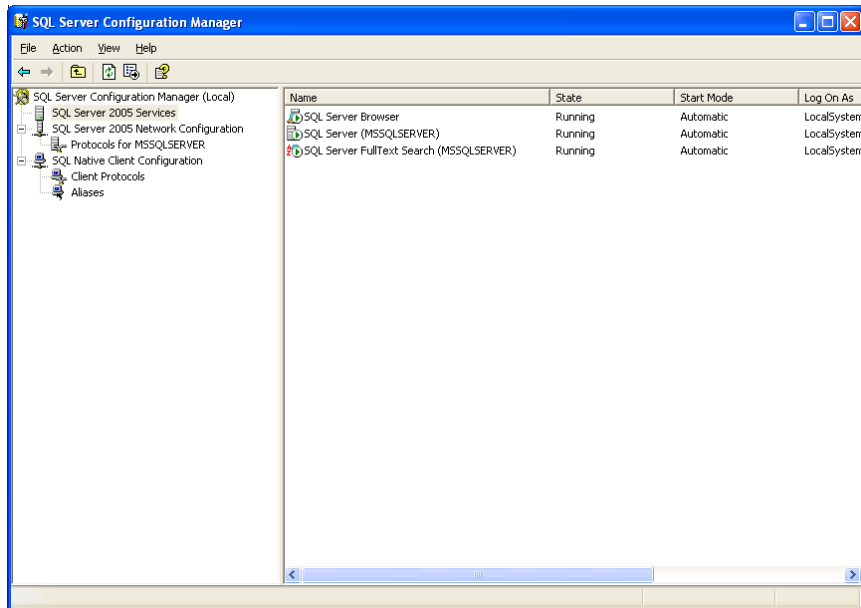
To configure SQL Server 2005 Express Edition with Advanced Services:


1. Ensure that the 963 is not running.
2. On the **Start** menu point to **Programs**, point to **Microsoft SQL Server 2005**, then point to **Configuration Tools** and click **SQL Server Configuration Manager**. The **SQL Server Configuration Manager** window is displayed.
3. In the left pane click **+** next to 'SQL Server 2005 Network Configuration Services'.
4. In the left pane click **Protocols for MSSQLSERVER**.



5. Right click **Named Pipes** and click **Enable**. A dialogue box is displayed, click **OK**.
6. Right click **TCP/IP** and click **Enable**. A dialogue box is displayed, click **OK**.

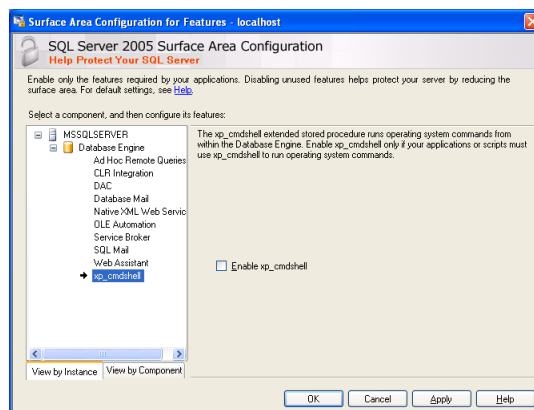
- In the pane click **SQL Server 2005 Services**.




- Right click **SQL Server (MSSQLSERVER)** and click **Restart**.
- Once the restart is complete click .
- On the **Start** menu point to **Programs**, point to **Microsoft SQL Server 2005**, then point to **Configuration Tools** and click **SQL Server Surface Area Configuration**. The **SQL Server 2005 Surface Area Configuration** window is displayed.



- Click **Surface Area Configuration for Features**. The **Surface Area Configuration for Features** dialogue box is displayed.
- Click **xp_cmdshell**. The display changes.



13. Select the **Enable xp_cmdshell** check box.
14. Click **Apply**.
15. Click **OK** to return to the **SQL Server 2005 Surface Area Configuration** window.
16. If the SQL server is installed on a remote PC click **Surface Area Configuration for Services and Connections**. The **Surface Area Configuration for Services and Connections** dialogue box is displayed.
17. Under 'Database Engine' click **Remote Connections**.
18. Ensure that the **Local and remote connections**, and the **Using both TCP/IP and named pipes** options are selected.
19. Click **Apply**.
20. Click **SQL Server Browser**.
21. Ensure that *Automatic* is selected in the **Startup type** box.
22. Click **Apply**.
23. Click **OK**.
24. Click .

2.4.2 SQL 2005 Full Version

2.4.2.1 Install a Full Version of SQL Server 2005

To install a full version of SQL Server 2005:

1. Install SQL Server according to the instructions supplied by Microsoft®. During the installation you must ensure that the following information is configured.
 - Ensure that the advanced configuration options are not hidden.
 - Install all features.
 - SQL Server instance. The SQL server can be installed using any instance, however Trend recommend MSSQLSERVER.
 - The built-in System account should be set to 'Local System'.
 - The SQL Browser service must be started at the end of set up.
 - Mixed Mode (Windows Authentication and SQL Server Authentication) must be used with a password of 'saTrend06'.
 - The currently logged on user must be added to the SQL Server Administrator role.
2. For 963 to operate it is necessary to configure a Full Version of SQL Server as described in the 'Configure SQL Server 2005 Express Edition with Advanced Services' section of these instructions.

Caution the operation should only be carried out by an SQL specialist.

2.4.2.2 Configure a Full Version of SQL Server

If a full version of SQL Server has been installed manually as described in the 'Install a Full Version of SQL Server' section of this manual it must be configured correctly so that 963 can be used.

To configure SQL Server:

1. Ensure that the 963 is not running.
2. Following the instructions supplied by Microsoft® configure the following:
 - Enable 'Named Pipes'.
 - Enable 'xp_cmdshell'.

If the SQL server is installed on a remote the following must also be configured.

- Enable local and remote connections.
- Enable both TCP/IP and named pipes for local and remote connections.
- Set the SQL Browser service to start automatically.

Caution the operation should only be carried out by an SQL specialist.

2.5 License 963

Before 963 can be used, it must be licensed. The licence will allow you to run 963 on a single PC. If you wish to run 963 on another PC, another licence must be purchased, or the existing licence transferred to the other PC as described in the 'Transfer the Licence to a Different PC' section of these instructions.

If 963 is already licensed, and you want to upgrade the licence to allow client/server operation, or more clients, contact us and purchase the appropriate upgrade. You will then be provided with a new site key that must be entered before the new facilities will be available.

To licence 963:

1. Obtain an unlock code as described in the 'Obtain an Unlock Code' section of these instructions.
2. Enter the unlock code as described in the 'Enter the Unlock Code' section of these instructions.


The 963 uses CrypKey to perform the licensing functions. CrypKey may not work after disk defragmentation using Speed Disk included in Norton utilities. This problem may exist with other defragmentation programs; see the 'Problems with Defragmentation Programs' section of the 963 Engineering Manual (TE200637).

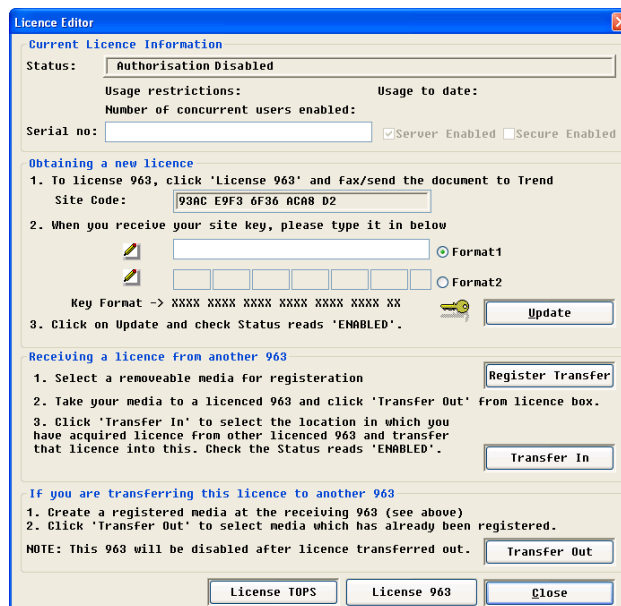
The use of virus scanning and anti spyware programs may also cause problems with the licence as they may remove one of the CrypKey files, see the 'Problems with Virus Scanning and Anti Spyware Programs' section of the 963 Engineering Manual (TE200637).

2.5.1 Obtain an Unlock Code

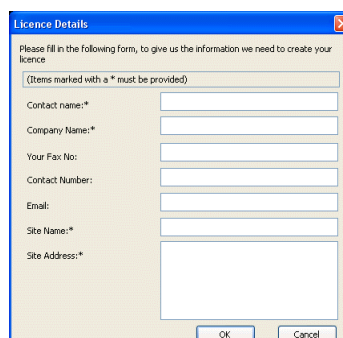
To licence 963 it is necessary to obtain an unlock code.

To obtain an unlock code:

1. Run 963.
2. Log in as someone with a PIN level of 99.
3. Press F1 to display the **Information Centre**.
4. Click . The **Licence Editor** dialogue box is displayed.



5. If it is not displayed in the **Serial no** box enter the serial number. The serial number can be found on the back of the CD case.
6. Click **Licence 963**. The **Licence Details** dialogue box is displayed.



7. In the **Contact Name** box enter your name.
8. In the **Company Name** box enter your company name.
9. In the **Your Fax No** box enter your fax number. This is the fax number to which the unlock code will be faxed.
10. In the **Contact Number** box enter a telephone number at which you can be contacted.
11. In the **Email** box enter your email address.
12. In the **Site Name** box enter the site on which 963 is to be installed.
13. In the **Site Address** box enter the address of the site.
14. Click **OK**. Notepad will now be run with the file 'faxform.txt'.
15. On the **File** menu click **Print** in notepad to print out this file.
16. Click **Close** to close the **Licence Editor** dialogue box.
17. Email the 'faxform.txt' file (located in c:\trend control systems\963) to trends@trendcontrols.com, fax the printout to our Customer Services Department on +44 (0) 1403 226310 or phone customer services on +44 (0)1403 226600.
18. When you receive the licence information, you should licence 963 immediately. You will be supplied with a Site Key that will allow 963 to run; no further software installation is necessary.

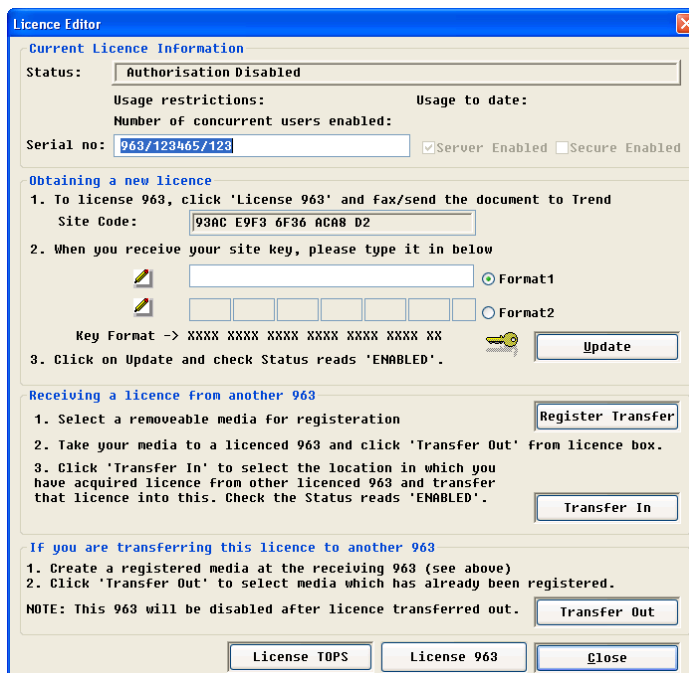
2.5.2 Enter the Unlock Code

To enter the unlock code:

1. Obtain an unlock code as described in the 'Obtain an Unlock Code' section of these instructions.
2. Run 963.
3. If the trial period has not expired log in as someone with a PIN level of 99, press **F1** to display the

Information Centre, and click .

4. The **Licence Editor** dialogue box is displayed.



5. In the **When you receive your site key, please type it in below** box enter the unlock code either by clicking **Format 1** and copying and pasting it into the box, or clicking **Format 2** and typing it into the box.
6. Click **Update**, a dialogue box is displayed informing you that the 963 has been licensed. If you want to view a text file containing detailed licence information is displayed click **Yes**, otherwise click **No**.

Note that the text file containing detailed licence information is '963LicenceDetail.txt' store in the directory the 963 is installed in, and can be viewed in Notepad.

7. Click **Close**.

Note that the procedure described above can also be used to update the licence if it has changed.

8. Restart the 963.

If the 963 has been licensed with SMS Direct a dialogue box is displayed allowing the GSM connection to be configured click **OK** to configure the GSM Connection now, or **Cancel** to leave it until later. For details of configuring the connection see the 'Configure the GSM Connection' section of these instructions.

2.6 Configure 963 to Connect to a Remote SQL Server

If required 963 can connect to a SQL Server on a different device this enables 963's database to be located on a network drive.

To configure 963 to connect to a remote SQL server:

1. Run 963 and log in. If using 963 Secure log in as a user in the 'System Administrator' workgroup.
2. On the **Database** menu click **Properties**. The **Database Properties** dialogue box is displayed.
3. In the **Current database server** box specify the location of the SQL Server. If the default SQL instance has been used (MSSQLSERVER) it is only necessary to enter the name of the PC on which SQL Server is running. If a different instance name has been used the location of the SQL Server must be specified using the PC name and the instance name in the form shown below.

<SQL server PC name>\<instance name>

<SQL server PC name> specifies name of the PC on the network on which the SQL Server is installed.
<instance name> specifies instance name used to install the SQL Server.

E.g.

963\TREND963SQL

This specifies a PC called 963 and a SQL instance of TREND963SQL.

4. Click **OK**. A dialogue box is displayed reminding you that you need to restart 963.
5. Click **OK**.
6. Close 963.
7. Run 963. If the database exists 963 will connect to it, if not a dialogue box is displayed informing you that it can't connect to the database, click **Yes** to enable 963 to create a new database.

2.7 Connect the GSM Modem

If 963 SMS Direct is being used it is necessary to connect the PC the supplied GSM modem. The modem should be connected to the PC as described in the documentation supplied with the modem. Once the modem is connected to the PC the GSM connection must be configured as described in the 'Configure the GSM Connection' section of these instructions.

Note that the GSM modem supplied with 963SMS Direct does not contain a SIM card. The SIM card should be obtained separately before connecting the GSM modem.

To connect the GSM modem:

1. Obtain a SIM card.
2. Connect the GSM modem to the PC as described the supplied documentation.

Do not install the mobile phone tools on the CD supplied in the modem package as they may interfere with the operation of 963 SMS.

2.8 Configure the GSM Connection

If the 963 has been licensed with SMS direct it is necessary to configure the GSM connection that is to be used. The first time 963/.../SMS is run a dialogue box enabling the GSM connection to be configured is displayed. You can choose to configure it then, or it can be done later. The GSM connection can either be configured automatically or manually, as described in the 'Configure the GSM Connection Automatically', or 'Configure the GSM Connection Manually' sections of these instructions.

When configuring the GSM connection it is recommended that any PIN requirement of the SIM be disabled, the use of PINs is NOT recommended. 963 does allow the use of PINs, however if the SIM card is swapped and an incorrect PIN number is present within the supervisor the SIM is likely to become locked. This is because 963 attempts to unlock the SIM and after three incorrect attempts the SIM will be locked and a PUK number is required. 963 keeps track of how many times the PIN is entered and will warn you if it thinks you are about to lock your SIM. The PUK is available from whatever mobile phone network you are using and can be unlocked using any standard mobile phone.

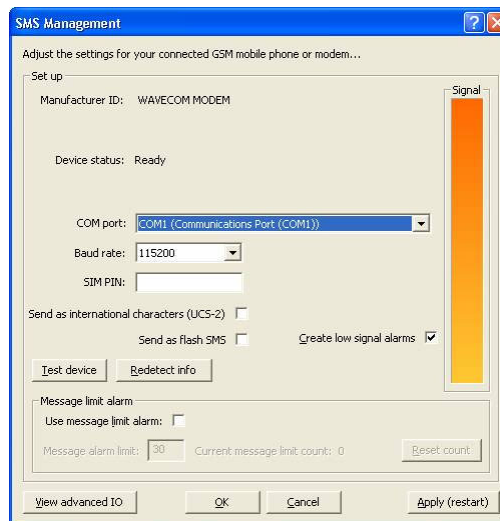
If a pay as you go SIM is being used to send the alarms it is recommended that a scheduled event be set up to send a regular SMS message to keep the SIM active. Some pay as you go SIM cards will be deactivated by the provider if they are not used for a period of time.

2.8.1 Configure the GSM Connection Automatically

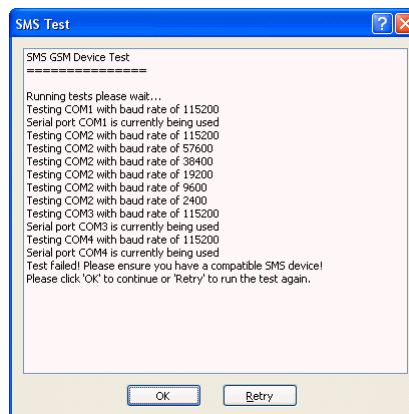
963 will scan all the PC's COM ports looking for a GSM device if one is found it will be used.

To configure the GSM connection automatically:

1. Run 963 and log in as someone with authority to configure SMS settings.
2. If the **SMS Management** dialogue box is not displayed on the **SMS** menu click **Properties** to display it.



3. Click **Test device**. A dialogue box is displayed asking you to ensure the GSM modem is connected.
4. Check the GSM modem is correctly connected to the PC and turned on.
5. Click **OK**. The **SMS Test** dialogue box is displayed. And 963 will scan all the COM ports to locate the GSM modem. The progress is reported in the dialogue box. To repeat the process click **Retry**.



6. Once the process is completed click **OK** to return to the **SMS Management** dialogue box. If 963 found the GSM modem its details will be used. If the GSM modem was not correctly detected you can configure the connection manually as described in the ‘Manually Configure the GSM Connection’ section of these instructions.
7. If a PIN is required to access the SIM enter the required PIN in the **SIM PIN** box.

Caution: If the PIN is incorrect all SMS activity will cease until a correct PIN has been entered and activated. Incorrect entry of a PIN number may result in the SIM being locked requiring a PUK number from the network service provider. It is recommended that any requirement for entry of a PIN to activate the SIM is disabled.

8. If text messages are to include international (UCS-2) characters select the **Send as international characters (USC-2)** check box.

Note that if international characters are used only 70 characters are allowed in the SMS message. If international characters are not used the message can be up to 140 characters.

9. If text messages are to flash on the phone to select the **Send as Flash SMS** check box.
10. If an alarm is to be generated after a certain number of alarms have been sent select the **Use message limit alarm** check box, and in the **Message alarm limit** box enter the number of alarms that are sent before the message alarm limit alarm is generated.

This alarm is useful if a pay as you go SIM is being used to send the alarms. The message alarm limit can be set to the number of alarms that can be sent using the available credit on the SIM.

11. Click **Apply**. 963 will attempt to communicate with the modem to determine the manufacturer ID, and status.

If successful the information will be displayed in the dialogue box. The signal strength is also displayed in the **Signal** area. If unsuccessful 963 will inform you that it was unable to configure the GSM connection. Failure could be because the COM port may be in use by another program. The manufacturer ID and status can be re detected by clicking **Redect info**.

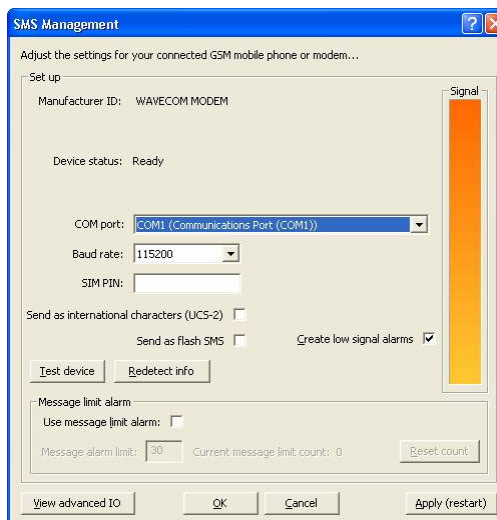
12. Click **OK**.

2.8.2 Configure the GSM Connection Manually

The GSM connection can be configured manually if for example the automatic configuration fails, or selects the wrong device if there is more than one.

To configure the GSM connection manually:

1. Run 963 and log in as someone with authority to configure SMS settings.
2. If the **SMS Management** dialogue box is not displayed on the **SMS** menu click **Properties** to display it.



3. In the **COM port** box click the COM port connecting the PC to the GSM modem.
4. In the **Baud rate** box click the baud rate for communications between the modem and PC.
5. If a PIN is required to access the SIM enter the required PIN in the **SIM PIN** box.

Caution: If the PIN is incorrect all SMS activity will cease until a correct PIN has been entered and activated. Incorrect entry of a PIN number may result in the SIM being locked requiring a PUK number from the network service provider. It is recommended that any requirement for entry of a PIN to activate the SIM is disabled.

6. If text messages are to include international (UCS-2) characters select the **Send as international characters (USC-2)** check box.

Note that if international characters are used only 70 characters are allowed in the SMS message. If international characters are not used the message can be up to 140 characters.

7. If text messages are to flash on the phone to select the **Send as Flash SMS** check box.
8. If an alarm is to be generated after a certain number of alarms have been sent select the **Use message limit alarm** check box, and in the **Message alarm limit** box enter the number of alarms that are sent before the message alarm limit alarm is generated.

This alarm is useful if a pay as you go SIM is being used to send the alarms. The message alarm limit can be set to the number of alarms that can be sent using the available credit on the SIM.

9. Click **Apply**. 963 will attempt to communicate with the modem to determine the manufacturer ID, and status.

If successful the information will be displayed in the dialogue box. The signal strength is also displayed in the **Signal** area. If required the manufacturer ID, and status can be re detected by clicking **Redect info**.


10. Click **OK**.

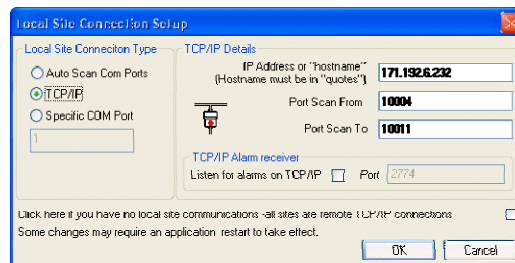
2.9 Connect to the IQ Network

2.9.1 Connect over Ethernet

963 can be connected to the IQ network over Ethernet using a standard Ethernet connection; this allows the office IT network to be used to connect 963 to the IQ network. Connecting 963 in this way requires a device (e.g. 3xtend/EINC L) containing a virtual CNC operating in supervisor mode.

To connect 963 to the IQ network over Ethernet:

1. Ensure the PC is connected to the Ethernet network as described in the 'Connect the PC to the Ethernet Network' section of this manual.
2. Run 963.
3. Log in as someone who can display the **Communications Window**.
4. Press F1 to display the **Information Centre**.
5. Click . The **Communications Window** will be displayed.
6. Click **Configure Comms**. The **Local Site Connection Setup** dialogue box is displayed.



7. Click **TCP/IP**.
8. In the **IP Address or hostname** box enter the IP address or hostname of the device containing the virtual CNC to which 963 is to connect. The hostname must be entered in quotes e.g. "Boilers".

Note that a hostname should be used if a DHCP server is being used on the system to setup the IP settings of the device containing the virtual CNC. You should also remember that 3xtend/EINC L's, and IQ3 controllers earlier than v1.3 do not support hostname addressing.

9. In the **Socket Scan From** box enter the port number of the first vCNC in the range of vCNCs to which 963 can connect (e.g. 10005).
10. In the **Socket Scan To** box enter the port number of the last vCNC in the range of vCNCs to which 963 can connect (e.g. 10006).

963 will be able to connect to the IQ network using any of the ports in the specified range. Because each port has a specific address on the IQ network, the address of 963 on the IQ network will vary depending on which port it uses.

If alarms are to be sent to 963 through this device, the top and bottom of the range must be the same to ensure the same network address is used each time 963 is started.

11. If 963 is to only access remote TCP/IP sites select the **Click here if you have no local site communications** check box.

12. Click **OK**.
13. Restart 963.

Note that if the device containing the virtual CNC goes into link/local mode (e.g. DHCP server fails) the 963's connection to the IQ network will be lost. This is expected behaviour if the PC is on the same network segment as the device containing the virtual CNC restart the PC. If the device is on a different subnet it will be necessary to fix the problem that caused the device to go into link/local mode.

2.9.2 Connect over the Current Loop


963 can be connected the IQ network over the IQ current loop using a NBOX/CNC2, which must be purchased separately.

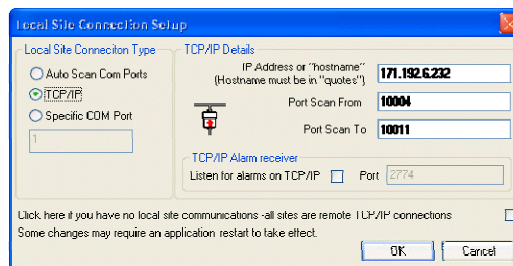
To connect to the IQ network over the current loop:

1. Ensure the 963 is not running.
2. Install the NBOX/CNC2 as described in the supplied installation instructions and connect it to the PC running 963.
3. Run 963. It will automatically detect the communications speed between its serial port and the NBOX/CNC2 used for this communication.

If this automatic detection fails the communications settings can be configured manually.

To configure the communications setting manually:

1. Log in as someone who can display the **Communications Window**.
2. Press F1 to display the **Information Centre**.
3. Click . The **Communications Window** will be displayed.
4. Click **Configure Comms**. The **Local Site Connection Setup** dialogue box is displayed.





5. Click **Specific COM Port** and enter the required COM port number. Clicking **Auto Scan Com Port** will cause 963 to find the port that is connected to the NBOX/CNC2 automatically which is the default, and should only be changed if there are communication problems.
6. Click **OK**.
7. Restart 963.

2.10 Check Communications

Once 963 is connected to the IQ network it is advisable to check that the communications are working correctly by looking at the **Basic Communications Display**, shown below. The display appears at the bottom of 963's window. It provides information about the status of communications in and out of the node connecting 963 to the IQ network, and the status of any remote connection devices on the system.



 TX and RX indicators: These flash green when 963 receives, or transmits information. If they appear grey, the 963 has been unable to locate the CNC.

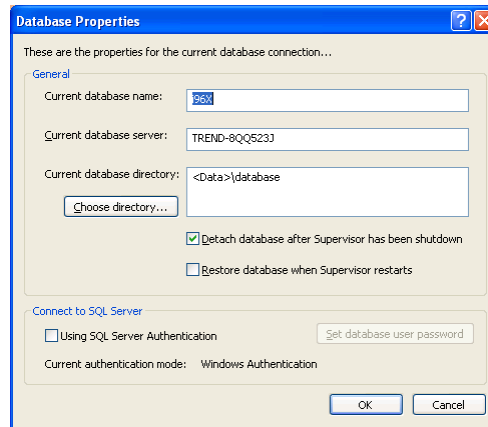
 Remote connection indicator: If grey, all of the devices are available for use, if red, at least one of them is attempting to make a connection, and if green, at least one is connected. Clicking this icon displays the **Remote Connection Window**.

2.11 Configure the Windows User to have Access to SQL Server

The Windows users that are to run 963 must have access to SQL server. If the user is an 'Administrator' user (is a member of the 'Administrator' workgroup) it will have access to SQL server and no additional configuration is necessary. However if the user is not a member of the 'Administrator' workgroup it is necessary to give the user access to SQL server this can be done by either making the user a power user (in the 'Power Users' Windows workgroup) and setting 963 to connect to SQL server in SQL Server Authentication mode, or giving the user access to SQL server, and connecting to SQL server in Windows authentication mode, this is the more secure option, but requires more configuration.

To make the user a power user and set 963 to connect to SQL server in SQL Server Authentication mode:

1. Log in to the PC as someone with Administrator rights.
2. Add the user to the 'Power Users' Windows workgroup. For details about configuring Windows user accounts and workgroups see appropriate operating systems documentation.
3. Run 963.
4. Log in. If using 963 Secure log in as a user in the 'System Administrator' workgroup.
5. On the **Database** menu click **Properties**. The **Database Properties** dialogue box is displayed.



6. Select the **Using SQL Server Authentication** check box in the **Connect to SQL Server** area.
7. Click **OK**.
8. Close 963.

To give the user access to SQL Server and set 963 to connect to SQL server in Windows Authentication mode:

1. Log in to the PC as someone with Administrator rights.
2. Give the user access to SQL Server by adding the user to the 'SQLSERVER2005MSSQLUSERS\$<xxxx>' Windows workgroup. Where <xxxx> is the PC name. This group is created when SQL Server is installed. See the SQL Server documentation for details. For details about configuring Windows user accounts and workgroups see appropriate operating systems documentation.
3. By default 963 connects to SQL server in Windows Authentication mode. To check this is the case ensure that the **Using SQL Server Authentication** check box in the **Connect to SQL Server** area of the **Database Properties** dialogue box is cleared.

3 UPGRADE

In most situations upgrading from an earlier version of 963 will simply be a matter of inserting the 963 DVD and following the instructions on the screen. The existing version of 963 will be upgraded to the latest version, and the 963's database updated accordingly. There should be no need to relicence 963.

In the following circumstances it will be necessary to follow a different installation procedure.

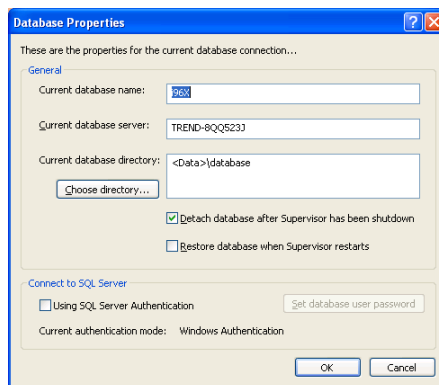
- Upgrading a 963 where the 963's database is running on a remote SQL server (i.e. on another PC). See the 'Upgrade 963 when the Database is on a Remote PC' section of this manual for details.
- Upgrading from 963 v1.x or 962 it may be necessary to check the SQL queries. See the 'Upgrade from 963v1.x or 962' section of this manual for details.

3.1 Upgrade 963 when the Database is on a Remote PC

If upgrading a 963 where the 963's database is running on a remote SQL server (i.e. on another PC) the installation program will not be able to perform the necessary updates to the 963's database on the remote PC therefore it will be necessary to manually upgrade the 963 database on the remote PC.

To upgrade 963 when the database is on a remote PC:

1. Run 963.
2. Log in. If using 963 Secure log in as a user in the 'System Administrator' workgroup.
3. On the **Database** menu click **Properties**. The **Database Properties** dialogue box is displayed.



4. Select the **Detach database after supervisor has been shutdown** check box.
5. Click **OK**.
6. Close 963.
7. Backup the database files, and any other data files before upgrading 963.
8. Upgrade the 963 on the 963 PC ensuring that the 963 is installed in the same directory as original 963 as described in the 'Install the 963 Software' section of this manual.
9. Do not run 963.
10. Copy the 963 database files (mdf and ldf files in the C:\Program Files\Trend Control Systems\963\database directory) from the remote PC to the same location on the 963 PC.
11. Run notepad, and open the S2.INI file in the install directory (normally c:\program files\trend control systems\963).

Note that if the 963 is running on Windows Vista™ you must run notepad with administrator rights. This will require you to have access to a password for a Windows user with administrator rights.

12. Search through the file to find the following line:

```
[DATABASE]
Server=
```

13. Make a note of the 'Server=' setting you will need it later.
14. Change the 'Server=' setting to '.' so 963 uses the local database files as shown below.

```
Server=.
```

15. Run 963. The local database files will be updated.
16. Close 963.
17. Copy the 963 database files (mdf and ldf files in the C:\Program Files\Trend Control Systems\963\database directory) from the 963 PC to the same location on the remote PC.
18. Set the 'Server=' setting in the [DATABASE] section of S2.INI file back to the original setting before it was changed in step (15).
19. Run 963.

3.2 Upgrade from 963 v1.x or 962

If 963 v1.x or 962 has been installed and engineered on the PC, it is possible to upgrade to the latest version of 963 without having to re-engineer the system. However a new licence is required to enable 963 to run if upgrading from 962. The upgrade process will make a backup of the previous system so that if you decide not to purchase 963 it is possible to return to the original system.

If installing 963 on a PC that has a full installation of SQL server earlier than SQL Server 2005 it is necessary to upgrade to SQL Server 2005.

Note that historic alarms are not imported from the old 963 database. However they can still be viewed by viewing historic records, and specifying the old database. Schematic pages in version 2 are not backwards compatible with version 1. Therefore if pages are required to run in both version 1 and version 2 they must be engineered with 963 v1.


To upgrade from 963 v1.x or 962:

1. If upgrading a 963 which has password protection set up turn off the password as described in the 'Turn Off the Database Password in 963 v1' section of these instructions.
2. Backup the database files, and any other data files before upgrading 963.
3. If SQL Server has been prevented from performing command execution this must be re-enabled, see the 'Restrict SQL Servers Ability to Perform Command Execution' section of the 963 Engineering Manual (TE200637).
4. Close 963.
5. Install 963 as described earlier in this section ensuring that the 963 is installed in the same directory as original 963.
6. If the old configuration uses the VIEWQUERY, QUERYTOTEXTFILE, or PRINTQUERY actions it is recommended that you check the SQL queries to ensure that they work correctly and if necessary fix the problem as described in the 'Check SQL Queries' section of these instructions.
7. Alarm actions configured for a specific point are no longer supported a suitable alarm filter and alarm group should be configured instead

3.2.1 Turn Off the Database Password in 963 v1

If upgrading a 963 Secure that has password protection set up it is necessary to turn the password off.

To turn off the database password:

1. Log in as a user in the 'System Administrator' workgroup.
2. Click  or on the **Mode** menu click **Users** to select the **User Display**.
3. Right-click the **System Administrator** workgroup, and click **Properties**. The **Workgroup Information** dialogue box is displayed.
4. Click the **System Administrator** tab.
5. Click **Set Database Password**. A dialogue box asking if you are sure you want to change the database password is displayed.
6. Click **Yes**. A dialogue box is displayed that instructs you to restart 963.
7. Click **OK** to return to the **Workgroup Information** dialogue box.
8. Click **OK** to close the **Workgroup Information** dialogue box.
9. Close 963.
10. Run 963. As 963 loads the **Database Password** dialogue box is displayed.
11. In the **Please enter the old password** box enter the current password.
12. Clear the **Use a password** check box.

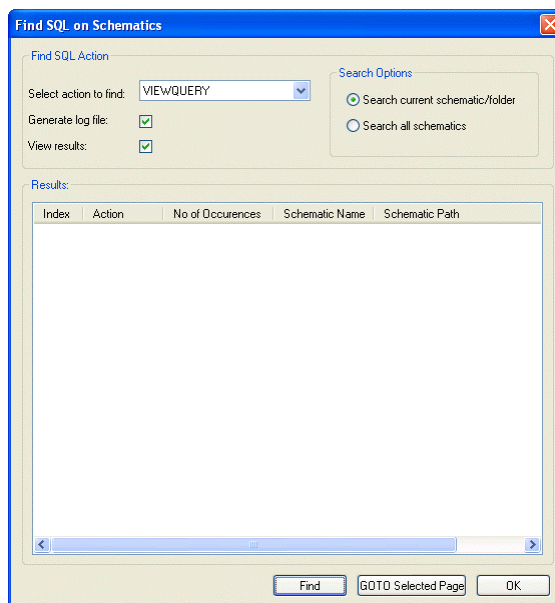
3.2.2 Check SQL Queries

If upgrading from a version of 963 earlier than v2.1 that uses the VIEWQUERY, QUERYTOTEXTFILE, or PRINTQUERY actions it is recommended that you locate the places they are use and ensure that they work correctly and if necessary fix the problem. This is because the database format used by v2.1 is different from earlier versions of 963 and therefore these actions may now fail. Theses action can be used on schematic pages, alarms actions, and in scheduled events. Some tools have been provided help you locate the places these actions are being used. Once you locate where these actions are used you should check each one in turn to ensure that it works correctly, and if not modify the SQL. For details of the 963's database structure see the 'Databases' section of the 963 Engineering Manual (TE200637)l.

To check the SQL queries:

1. Log in.
2. On the **Tools** menu point to **Search SQL From** and then click **Schematics**, **Scheduler**, or **Alarms** depending on which area of the 963 is to be searched. It may be necessary to search all three areas.

If **Schematics** was selected the **Find SQL on Schematic** dialogue box is displayed.



- In the **Select action to find** box select the action that you want to search for. To search for all three actions select **All**.
- In the **Search Options** area select the schematic pages that are to be searched. Click **Search current schematic/folder** to search the folder selected in the **Navigator**, or **Search all schematics** to search all schematics.
- To create a log file of the search results select the **Generate log file** check box.
- To prevent the search results being displayed in the **Results** box clear the **View Results** check box.
- Click **Find**. The search will be carried out. If the **View Results** check box is selected the results will be displayed in the **Results** box. To goto to a schematic page that has matched the search click it in the **Results** box and click **GOTO Selected Page**.

If **Scheduler** was selected a dialogue box listing any scheduled events that use the VIEWQUERY, QUERYTOTEXTFILE, or PRINTQUERY actions.

If **Alarms** was selected a dialogue box listing any alarm actions that use the VIEWQUERY, QUERYTOTEXTFILE, or PRINTQUERY actions.

3.2.3 Return to the Original 963 System

When you upgrade from an earlier version of 963, or 962 a backup of the system is made in a subdirectory of the install directory called 963_backup, or 962_backup. This means that if you decide not to use the latest version of 963 it is possible to return to the original system.

To return to the original system:


1. Copy the entire contents of the backup directory Backups into the install directory, normally c:\program files\trend control systems\963 or c:\program files\trend control systems\962.

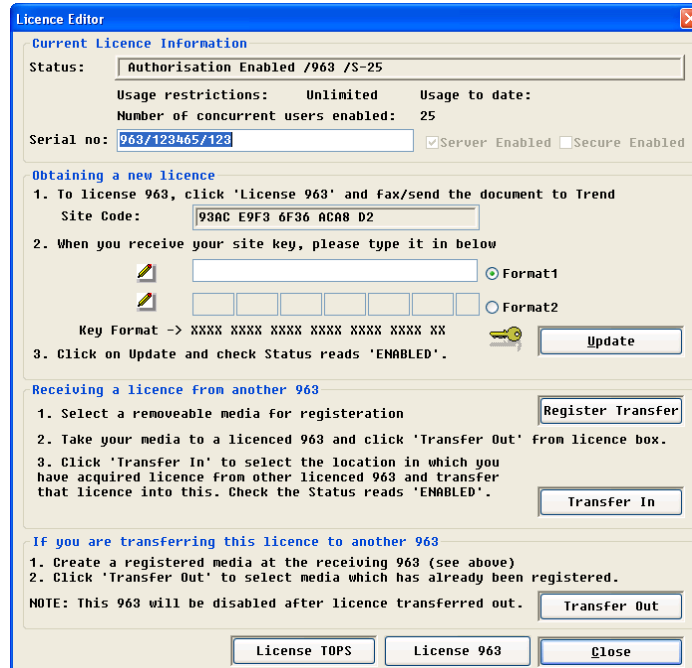
This page is intentionally left blank.

4 TRANSFER THE LICENCE TO A DIFFERENT LOCATION

If you want to use your 963 licence to run 963 in a different location e.g. on a different PC, or in a different directory, it is necessary to transfer the licence to that location.

To transfer the licence:

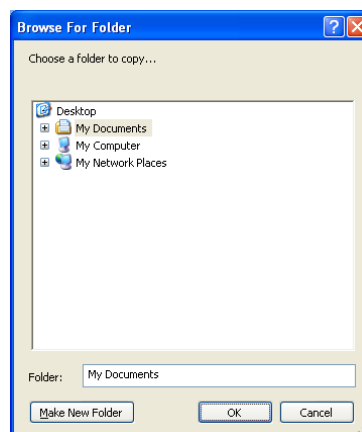
1. Install 963 in the new location as described in the 'Install the 963 Software' section of these instructions.
2. Run 963 in the new location.
3. Log in as someone with a PIN level of 99.
4. Press F1 to display the **Information Centre**.
5. Click . The **Licence Editor** dialogue box is displayed.



6. If transferring the licence to a different PC connect the removable media that is to be used to transfer the licence.



Note that this has been tested on floppy disk, USB flash disk. Trend cannot guarantee that other removable media type will work.

7. Click **Register transfer**. The **Browse for Folder** dialogue box is displayed.



8. Click the location to which the licence is to be copied. If moving the licence to a different PC this is the removable media. To create a new folder click **Make New Folder**.
9. Click **OK**. The **Are you sure?** dialogue box is displayed.
10. Click **OK**.
11. If transferring the licence to a different PC remove the removable media.
12. Run 963 the currently licensed 963.
13. Log on as someone with a PIN level of 99.
14. Press F1 to display the **Information Centre**.

Transfer the Licence to a Different Location

15. Click . The **Licence Editor** dialogue box is displayed.
16. If transferring the licence to a different PC connect the removable media being used to transfer the licence.
17. Click **Transfer Out**. The **Browse for Folder** dialogue box is displayed.
18. Click the location specified in (8).
19. Click **OK**. The **Are you sure?** dialogue box is displayed.
20. Click **OK**. The licence will be moved to the specified location. The 963 is no longer licensed to run in that location.
21. Run 963 in the new location.
22. Log on as someone with a PIN level of 99.
23. Press F1 to display the **Information Centre**.
24. Click . The **Licence Editor** dialogue box is displayed.
25. If transferring the licence to a different PC connect the removable media being used to transfer the licence.
26. Click **Transfer In**. The **Browse for Folder** dialogue box is displayed.

*Note that if **Transfer In** is not available, it is necessary to delete the 's2.key' in the install directory.*

27. Click the location specified in (8). Click **OK**. The **Are you sure?** dialogue box is displayed.
28. Click **OK**. The licence will be moved to the new location. The 963 is now licensed to run in the new location.
29. Click **Close**.

INDEX

Basic Communication Display	23	Connect	19
Check		Install	
Communications	23	963	8
Check SQL Queries	26	Software	12
Communications		IQ Current Loop	23
Check	23	IQ Network	22, 23
Connect	22, 23	Licence	
Port	22, 23	963	18
Without a Local Site	22	Obtain Unlock Code	17
Configure		Transfer	29
GSM Connection	20, 21	Remote	
Configure the Windows user account	24	Database	19
Connect		SQL Server	19
Ethernet Network	11	Return to the Original 963 System	27
GSM Modem	19	Set up	
IQ Network	22, 23	GSM Connection	20, 21
Without a Local Site	22	Software Installation	12
Contacting Trend	5	SQL Queries	
Conventions Used in this Manual	5	Check	26
Database		SQL Server	
Remote	19	Remote	19
Database Password		Transfer the Licence	29
Turn Off	26	Trend Network	23
Ethernet	22	Unlock Code	
Ethernet Network	11	Enter	18
GSM Connection		Obtain	17
Configure	20, 21	Upgrade	
Signal Strength	20, 21	From 963 v1	27
GSM Modem			

Trend Control Systems Limited

Albery House, Springfield Road, Horsham, West Sussex, RH12 2PQ, UK. Tel:+44 (0)1403 211888 Fax:+44 (0)1403 241608 www.trendcontrols.com

Trend Control Systems USA

6670 185th Avenue NE, Redmond, Washington 98052, USA. Tel: (425)897-3900, Fax: (425)869-8445 www.trendcontrols.com
